



# CLINICAL POWER IN YOUR PALM™

**ProComp2™ is a compact yet powerful 2 channel device that is ideal for you to:**

- Add both neurofeedback & biofeedback to your practice
- Expand your clinic quickly and economically with additional training rooms
- Enhance your practice without distance and time constraints, by providing online internet training or by renting out the system

## HARDWARE FEATURES

- Superior signal quality and accuracy, high resolution, low noise and wide frequency range
- Contains a built-in EEG sensor (simply connect an extender cable for EEG monitoring and biofeedback)
- Miniature Size: Easily worn on a headband or a shirt collar
- Impedance check available to ensure proper electrode contact
- Fiber Optic or optional Bluetooth connection to computer
- Monitors up to 2 channels simultaneously:
  - o 2 channels of EEG
  - o 1 EEG and 1 peripheral
  - o Combination of any 2 sensors: SC, TEMP, BVP & HR, EMG, RESP, EEG, EKG, Goniometry, Force, inclinometer, manual muscle tester/algometer, Voltage Isolator and HEG

### PROCOMP2 SYSTEM INCLUDES

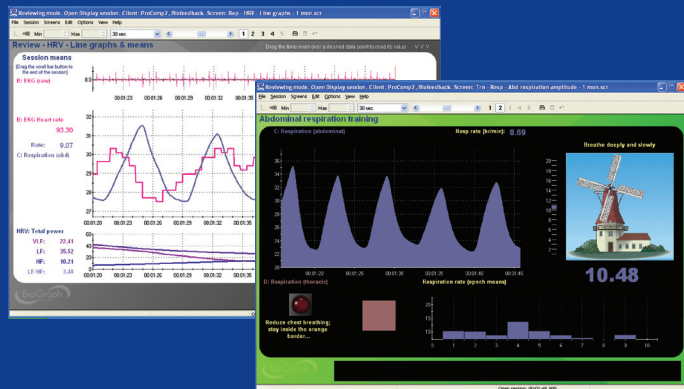
- ProComp2 encoder (with 1 built-in EEG sensor in Channel A)
- TT-USB interface and Fiber-optic cables (1' and 15')
- EEG Paste and prepping gel
- Your choice of monopolar, bipolar or DIN cable
- BioGraph Infiniti software with your choice of either EEG or Physiology Suite
- Free Users Group Membership
- Free technical support
- 1 year warranty on parts and labor

## PROCOMP2 HARDWARE SPECIFICATIONS

- Approx. Size: 2.2 x 2.8 x 7.5" (75x55x19mm)
- Approx. Weight: 40 g w/o Batteries
- EEG Resolution:  $\leq 0.1 \mu V$  RMS (Channel A)
- Sample Rates: 256 samples/second (Channel A, B) 32 samples/second (Channel C, D)
- Battery Life: 10 Hours (minimum) (1 Alkaline AA cell)

# SUITE AND APPLICATIONS

ProComp2 system comes with your choice of either EEG Suite™ or Physiology Suite™.

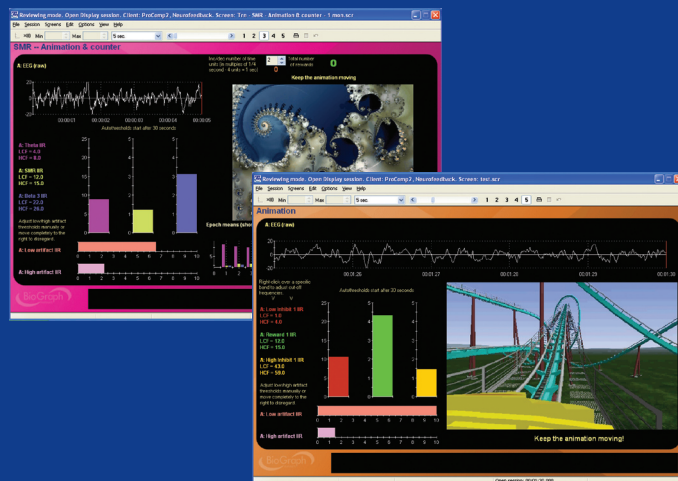


**PHYSIOLOGY SUITE** is designed for general biofeedback (SEMG, SC, Temp, Respiration, HR, BVP). It features a full range of Heart Rate Variability (HRV) biofeedback screens, as well as some new advanced HRV tools:

- Programmable Breathing Pacer
- HRV Resonant Frequency Detector
- Advanced Features such as NN50 & pNN50 computations

**EEG SUITE** is designed for neurofeedback, and features:

- On-the-fly frequency band adjustments
- In session impedance checking
- Manual and auto threshold instruments with user-specified target % of time
- Single and dual-monitor display screens with child instruments
- Real-time epoch statistics for instant trend graphing in session, as well as trend graphing post-session
- Industry standard Coherence algorithm for EEG Phase and Amplitude Asymmetry, matching Dr. Robert Thatcher's Neuro Guide database



## SOFTWARE FEATURES

ProComp2 system includes the full-functioning BioGraph Infiniti software. Enjoy all the features that BioGraph Infiniti offers:

- Z-Score Neurofeedback (used conjointly with Dr. Robert Thatcher's NeuroGuide z-score feedback library)
- Dual Threshold Feedback: for connectivity training protocols like coherence, phase and z-score, and for setting training limits for peripheral measures
- Trend reports to show client progress. Reports include your clinic name and information for 3rd party billing/insurance
- Automatic Artifact rejection for EEG
- 4-way DVD Feedback: shrink, zoom, volume, pause
- Automatic threshold
- Signal Smoothing during a session
- Screen thumbnails preview
- Binaural Beat Audio Feedback: Provides different tones in each ear
- Music Volume Feedback controlled by proportional signal
- Easy loading of the same training settings from the previous session to simplify setup and to ensure consistent training of your clients
- Global notch filters to eliminate 50 or 60Hz interference with EEG, EKG or EMG
- Quick data Import/Export to transfer session data between home and office, multiple clinics or remote training sites.
- Customizable list of event marker labels assigned to keyboard keys

As Neurofeedback and Biofeedback merge, the necessity to have all the modalities in one device becomes essential. ProComp2 maximizes your investment by combining neurofeedback with peripheral measures.



**Thought Technology Ltd.**  
Tel: 1-800-361-3651 • 514-489-8251 Fax: 514-489-8255  
<http://www.thoughttechnology.com>

MAR848-00